



STUDIO CITY RESIDENTS ASSOCIATION

Your Advocate for Studio City

January 2014

IN THIS ISSUE:

Free Trees Page 3

Studio City Cares Awards Page 4

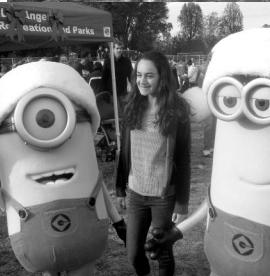
Weddington Golf & Tennis Status Page 5



THIRD ANNUAL WINTER FAMILY FESTIVAL TAKES THE COMMUNITY BY STORM

More than 4,500 people got into the holiday spirit at the third annual Winter Family Festival plus Radio Disney's Festival of Giving held at Studio City Recreation Center/Beeman Park on Sunday, December 8, 2013. The free event, presented to the community by the Studio City Residents Association (SCRA) and Studio City Recreation Center, was the largest ever, with thousands enjoying more than 70 tons of snow, including slides, snowball fights and snowman making. Donations to the Radio Disney

(Continued, Page 2)



2014 SCRA OFFICERS TO BE ELECTED

Since the Studio City Residents Association (SCRA) did not receive other nominations for SCRA officers beyond those submitted by the SCRA Nominating Committee in accordance with the SCRA bylaws, candidates nominated by the Nominating Committee will be duly elected at the Annual General Meeting of the Studio City Residents Association. The meeting takes place on January 14, 2014 at 7:30 p.m. at the Beverly Garland, 4222 Vineland Ave, Studio City. The officers will be Alan Dymond, president; Bonnie Goodman, executive vice president; Bryan Abrams, treasurer; and Connie Elliot, secretary. According to an SCRA board resolution made and carried unanimously, Claudia Freedle has agreed to accept the appointment as administrative vice president for the 2014 year.

(Festival, cont'd)

Festival of Giving included more than 500 pieces of clothing, more than 250 pounds of food, along with many boxes of books, toys and pet items. Radio Disney's Festival of Giving benefitted the North Hollywood Interfaith Food Pantry; St. Charles Service Center; the LAPD North Hollywood Division Gift and Food Drive; Pet Orphans, BookEnds and Iris Blossom Charities.

Local schools and community groups provided a range of musical entertainment, including performances by the Metropolitan Master Chorale, the "Beeman Park" performers, Arc English Hand Bell Choir, Walter Reed Jazz Band A and Campbell Hall Brazilian Percussion Ensemble. The Radio Disney Road Crew also entertained the crowd and hosted a number of giveaways and drawings. Guests enjoyed free photos with Santa shot by professional photographer Michaelyn Straub, face painting, craft-making, food trucks and more. A special highlight of the event, A Taste of the Holidays, featured eight restaurants, which offered free samples. Restaurants included Casa Vega, PizzaRev, Jinky's Café, Mendocino Farms, Daphne's California Greek, Warren's Blackboard Food & Drink Workshop, Lemonade and Pressed Juicery.

The SCRA and the Studio City Recreation Center thank all of the sponsors and the many volunteers, without whom this event would not happen. The organizers send a special thanks to the LAPD North Hollywood Division for the help of its cadets. Presenting sponsors included NBC Universal, CBS Studio Center, Century West BMW, the Studio City Improvement Association, the Studio City Farmers Market, Radio Disney Los Angeles, The BLVD Hotel & Spa and a private donor. Event sponsors included the Studio City Chamber of Commerce, Michaelyn Straub Photography, Star Parking, Studio City Lifestyle Magazine, Alan Taylor Real Estate, and the Studio City Neighborhood Council. Contributing sponsors included Shaolin American Self Defense Academy and Sportsmen's Lodge. For more information, visit <http://www.studiocityresidents.org/festival>

BEAUTIFUL STUDIO CITY

The Studio City Beautification Association (SCBA) has now completed the Eastside Median between Lankershim Boulevard and Vineland Avenue on Ventura Boulevard. The area posed quite a challenge with excavation

through successive layers of asphalt and concrete pavement, down to the footpath origins of El Camino Real. Similar to other SCBA's projects across Studio City, the Eastside Median will be maintained by professional crews, managed and paid for by the SCBA. Many thanks to the SCBA's individual yearly contributors and to corporate project sponsors NBCUniversal and the BLVD Hotel & Spa for their generous grants. These contributions have allowed this long-standing dreary patch of asphalt to spring to life. The SCBA is a recognized 501c3 tax-exempt organization. Donations are tax-deductible. The SCBA has been recognized as the most active volunteer community beautification association in Los Angeles.

ASK THE SCRA

One of the functions of the SCRA is to empower its members, who are the eyes and ears of the community. The SCRA can assist by providing opportunities to make all of Studio City a better place to live. Please send questions to scraboard@studiocityresidents.org.

Q: Is it legal to be hosing down a driveway and hosing off the street or sidewalk? I thought we were not supposed to do that unless it was an emergency.

SCRA: According to City Council District 2, this is still a violation; however, the investigative team at the Department of Water & Power is limited. If you have a specific address where a violation is occurring, you can report it to the DWP area liaison David Rahimian, at David.Rahimian@ladwp.com.

Q: We have received notice from the Studio City Neighborhood Council (SCNC) Land Use Committee that it will be hearing the issue of the conversion of the lot at 4411 Lemp Street from a single family residence to eight units. Can you advise on the type of comments that carry the most weight on these types of issues?

SCRA: Lisa Sarkin, chair of the SCNC Land Use Committee, clarified the issues for the SCRA. The development site is right next to a single family dwelling and a short apartment. It is not a "by right" because the developer wants to split the single lot. Comments and arguments in opposition to this development should focus on the request to split the single lot. If other single family dwellings are on similar size lots to the one the developer wants to split, then argue that splitting the lot will not be consistent with the rest of the lots around it. Also point out where the single family dwellings are located next to this project. Argue privacy and that this development would not be in keeping with the surrounding neighborhood as well as the impact on reduction in value of your property. The definitive vote

(Continued, Page 3)



(Ask SCRA, cont'd)

will be taken before the City Council; neighbors need to send their arguments to City Councilmember Paul Krekorian.

Update: The SCNC Board voted unanimously to oppose the project. The South Valley Planning Commission hearing has not been posted. The SCRA understands the fight in the community is not over. Two more properties, 4415 Beck Avenue and 4414 Lemp Street, have been purchased by limited liability corporations.

Q: This will be short because I have only one hand to use to type; the other is in a brace, although fortunately not broken. I was foolish enough to engage in rather risky behavior. I'm guilty of walking on Studio City sidewalks and suffered the consequences. Certainly the City of Los Angeles has many needs, but is there anything more basic than being able to walk around your block without risking injury? Hasn't the non-responsiveness of the offices of the Mayor and City Council on this issue of sidewalk safety gone on long enough?

SCRA: We are sorry to hear about your accident! Yours is a case in point to our City Council and Mayor about why they need to do something about our crumbling infrastructure. The SCRA has been following this problem for quite some time, and has testified at City Council committee meetings and contacted city offices to discuss the problem and solutions. Each year, the City pays out millions in claims due to trip-and-fall accidents on city sidewalks. A few of our councilmembers have it on their radar, but the body as a whole unfortunately has not adopted a plan to address the issue. The SCRA urges you to send your email to City Councilmember Paul Krekorian (councilmember.krekorian@lacity.org). The SCRA has been actively pushing for street and sidewalk repairs and will continue to do so. Incidents like yours are why we are adamant that something be done.

ON OUR WAY TO ONE MILLION TREES IN LOS ANGELES

At least seven trees have been planted within the last few months by the City of Los Angeles Department of Urban Forestry in the vicinity of Laurel Terrace and Maxwellton Road, also referred to as the "Silver



Triangle." The trees were planted in accordance with a program to plant one million trees on city properties in Los Angeles, including sidewalks, parkway strips and medians. The program is designed to beautify neighborhoods, encourage foot traffic and support the environment, and provides material, labor and permits, all at no cost. If a tree is planted on a residential parkway, the resident is asked to water the tree for five years to get the tree established. Any number of trees can be planted at a location where that is legally permissible but not by such areas as fire hydrants, telephone guy wires or near underground utilities. More information as well as a form to request permission to plant a tree is available at www.environmentla.org. Click the upper right hand corner "Sign up for a tree" or contact Amy Schulenberg at Amy.schulenberg@lacity.org or 213-485-0527.

STATE SENATOR ALEX PADILLA ADDRESSES THE SCRA



State Senator Alex Padilla spoke at the November 2013 SCRA meeting, providing SCRA members and guests with a brief recap of his background and political offices held to date. He explained he understood the importance of maintaining the

Weddington Golf & Tennis facility as recreational open space for the community. According to Senator Padilla, the Statewide Water Bond, which may be on the 2014 ballot, may contain a funding element to acquire the property. The proposed bond is for construction of the twin tunnels under the Sacramento Delta for water transportation to Southern California and other restorative works in that location. The Senator pointed out that one half of the population of California who would vote on such a bond measure resides south of a line drawn approximately through Van Nuys, so these potential voters are critical.

The Senator was also familiar with the Harvard Westlake campus and sensitive to the SCRA's opposition to the project; however, he was not familiar with details of the proposed expansion plan. The Senator also voiced his support of a bullet train, explaining that when looking 50 to 75 five years down the road, he could not imagine a future that did not include the train, and suggested the longer we waited, the more expensive it would become.

As author of state legislation for banning single use plastic bags at grocery markets, Senator Padilla suggested research has shown minimal job displacement

(Continued, Page 4)

(Padilla, cont'd)

for the local plastic bag industry and that many of those positions would be replaced with the production of reusable bags.

In response to questions on crime and response by the police, he suggested that residents reach out to local LAPD captains as well as the senior lead officers to foster strong relationships. Additionally, he said that neighborhoods that connect with each other and establish good communications are the best deterrent to criminal activities.

The Senator also discussed the earthquake warning system that would provide a half-minute warning. Countries in quake prone areas already have a warning system in place; the Senator is working to round up the votes and get funding in place for an early warning system for California.

He also expressed concern that patients not waive their privacy rights when undergoing genetic testing; the results should not be provided to companies without patients knowing and fully understanding what it is they are signing away.

SCRA ANNUAL GENERAL MEETING TO ADDRESS PARKING METERS



In addition to presenting its annual Studio City Cares Awards at the SCRA Annual General Meeting on January 14, 2014 at the Beverly Garland, the SCRA will host Studio City resident Steven Vincent

and Sherman Oaks activist Jay Beeber, whose work contributed to the end of the City of Los Angeles' red light camera program in 2011. The two are launching a new effort to convince the City to overhaul its policies on parking meters, which will include lowering rates, increasing maximum parking time and reducing penalties for parking at expired meters, plus related parking meter issues. They will welcome comments, questions and suggestions from the guests.

The meeting will also include a representative of the North Hollywood LAPD, who will address questions from SCRA members about important safety issues.

SCRA ANNUAL GENERAL MEETING TO FEATURE STUDIO CITY CARES AWARDS

The Studio City Residents Association (SCRA) Annual General Meeting on January 14, 2013 will feature a special salute to five dedicated volunteers in the community, presenting its annual Studio City Cares Awards to these deserving individuals who do so much to make Studio City the wonderful community that it is. The awards will be presented to Karen Young, former editor of the Sun Community Papers and founder of MyDailyFind.com, for Excellence in Business Leadership; Deuk Perrin, president, Campo de Cahuenga Historical Memorial Association, for Excellence in Community Service; Dorothy Barrett, actress, dancer and owner of the American National Academy of Performing Arts in Studio City since 1957, for Service to Developing Youth; and Ben Saltsman, planning deputy for Los Angeles County Supervisor Zev Yaroslavsky, for Excellence in Government Leadership. In addition, the SCRA will present its highest honor, the Fran Quigley Award, in recognition of exceptional service, to Carol Armstrong, Ph.D. Armstrong was the project manager responsible for implementing the Los Angeles River Revitalization Master Plan adopted by the Los Angeles City Council in 2007. Please join us to salute these fine individuals and learn more about their defining contributions.

In addition, that evening, the SCRA will present a check to the Studio City Recreation Center (aka Beeman Park) from monies raised as part of the SCRA's Third Annual Winter Family Festival and Radio Disney's Festival of Giving. This grant is made possible by contributions from local organizations, merchants and others who supported the Festival held at the park.

The meeting will be held at 7:30 p.m. at the Beverly Garland, 4222 Vineland Ave, in the Theatre Room. Join the SCRA for an opportunity to meet with community members and enjoy light refreshments immediately prior to the meeting.

HILLSIDE FEDERATION UPDATE

Pacoima Reservoir: Dan Feinberg, president of CASM SFV Inc., a California nonprofit corporation, made a presentation about the Los Angeles County Department of Public Works, (DPW) and its flood control district (FCD), specifically regarding the County's 20-year

(Continued, Page 5)

Sediment Management Strategic Plan for the Pacoima Reservoir. Recent wildfires have led to an increased inflow of sediment and debris into the Pacoima Reservoir above Sylmar. The DPW says the "Total 20-Year Planning Quantity" is up to 7.6 million cubic yards (760,000 truckloads), which will be dumped into two new sediment dumps in the canyons above Sylmar. CASM's mission is "protecting and fostering the responsible use of the San Fernando Valley's natural resources." The organization, which has more than 5,000 stakeholders, understands the DPW must remove the sediment from the reservoir; however, it questions why the sediment cannot be placed in the Maple and Cougar Canyons, which was the plan originally proposed by the DPW in December 2011. For more information, go to CASM's website, www.casm-sfv.org/CASM-SFV.html, or contact Dan Feinberg directly at 818-415-1261.

Harvard Westlake Development: The Santa Monica Conservancy has gone on record opposing the proposed development.

Weddington Golf & Tennis: No news yet about when the Weddington Golf and Tennis Draft Environmental Report (DEIR) will be released. The SCRA has renewed its relationship with the law firm of Chatten-Brown and Carstens as counsel to represent the SCRA in response to the DEIR. This same firm provided counsel to the SCRA more than five years ago when the proposal to develop the area was first mentioned.

Harvard Westlake Development: SCRA expressed its opposition to the project at a presentation of the proposed development by Harvard Westlake at a Studio City Neighborhood Council meeting.

NBCUniversal: The board of Citizens United for Smart Growth, formed to oppose the development at Universal in part, has voted to wind down the corporation. The SCRA has a seat on the board. At some future date, the corporation may be activated when the Metro site at Lankershim is proposed for development. This station is now within Studio City, but the rest of the site is divided between Council Districts 2 and 4.

PRESIDENT'S MESSAGE *by Alan Dymond*

Happy New Year!

Once again, there is a proposal to develop Weddington Golf and Tennis (formally known as Studio City Golf and Tennis). The scope of the development includes the elimination of the tennis courts and plans to build 200 condominiums with parking for 613 cars underground, plus additional surface parking for 22 cars. Thanks to legal representation retained by the SCRA in 2007, we determined that a full Environmental Impact Report must be prepared. The latest proposal is going through an initial review of environmental impacts by the Los Angeles Planning Department; however, to date the draft has not been released. In anticipation of the release of the Draft Environmental Impact Report (DEIR), the SCRA has retained the law firm of Chatten-Brown and Carstens to respond to the DEIR. The SCRA also hopes the Studio City Chamber of Commerce and the Studio City Neighborhood Council will join the SCRA in opposing this development as they have done in the past. For more details check the updated website at <http://savelariveropenspace.org/>

The proposed Harvard Westlake development on Coldwater Canyon Avenue is opposed by Save Coldwater Canyon (SCC). Harvard Westlake wants to build a three-story parking structure with a flood-lit sports field on top as well as a connecting bridge over Coldwater Canyon Avenue to the campus on the other side of the street. SCC has retained Chatten-Brown and Carstens to represent it in opposing the project. The SCRA shares Save Coldwater Canyon's position. As a result, the SCRA board voted to assist SCC in meeting its expected costs and will be sharing information in filing opposition to the project. SCC is a California nonprofit public benefit corporation.

SCRA member John Hopgood told me he is working on the Affordable Care Act in California (ACA). As one who grew up in the UK under "socialized" medical coverage, I played rugby well into my thirties without the worry of medical attention in the event of an injury. Yes, there were a few incidents, but I had no out-of-pocket costs. John informed me that more than 400 students came to an ACA presentation at Cal State Northridge. It crossed my mind that those students could play sports or engage in other physical activities without worry, just as I did in the UK. I asked John if he had any recommendations; he said log onto <https://www.coveredca.com/> On the home page of the website, you will see a "shop and compare" tool. Enter your age, income and zip code, and it will show a few plans for which you qualify. Next, talk with a certified counselor to help you enroll. Certified counselors can also assist by speaking with groups such as churches, temples, senior housing and businesses. For more information, contact John Hopgood 818-609-0709 or jhopgood@bpgsafety.com.

Alan Dymond

P.O. Box 1374, Studio City, CA 91614



JANUARY 2014

PRINTED WITH SOY-BASED INKS

SCRA ANNUAL GENERAL MEETING

Tuesday, Jan. 14, 2014

AGENDA

- 7:00 p.m. Refreshments
- 7:30 p.m. SCRA presents the Studio City Cares Awards. Presentations by Steven Vincent/Jay Beeber on parking meters, LAPD on safety.

Meeting Location

Beverly Garland Theatre
4222 Vineland Avenue, Studio City

When entering the hotel driveway, turn left and go through the parking turnstile. Drive to the end and turn right. Go to the large back lot. The handicap entrance is from this lot. Walk to the southwest corner of the lot, and signs will direct you to the Beverly Garland Theatre. PARKING WILL BE VALIDATED at the sign-in-table.

The SCRA thanks the Beverly Garland for continued support of the monthly SCRA Community Meetings



SCRA Committees

Burbank Airport, Chair: Chris Barnes
Crime and Safety
Los Angeles River Committee
Membership
Planning and Land Use

Officers

Alan Dymond, President
Bonnie Goodman, Exec. Vice President
Claudia Freedle, Admin. Vice President
Connie Elliot, Secretary
Bryan Abrams, Treasurer

Board Members

Beth Dymond
Martha Hanrahan
Steve Hirsh
Art Howard
Barry Johnson

Robin Seidel
Barry Weiss
Karen Younce
Junior member Jason Goodman

Immediate Past President

Art Howard

Beautification Association

Bill Harmond, President
Francesca Corra, Vice President
Connie Elliot, Secretary
Bryan Abrams, Treasurer

Save L.A. River Studio City Open Space

Co-Directors
Laurie Cohn, Alan Dymond, Steve Hirsh,
Art Howard, Patty Kirby, Chip Meehan,
Aaron Mendelsohn, Barbara Robbin
saveopenspace@SLAROS.org

School Liaisons

Carpenter - Bonnie Goodman
Rio Vista - Barbara Robbin
Walter Reed - Bonnie Kalaf

Studio City Farmers Market

(818) 655-7744
www.studiocityfarmersmarket.com

Newsletter

Editor: Bonnie Goodman
Graphic Design: Kevin Lewis
(818) 667-6647 kevin@kevlew.com